

# Creatures of the night

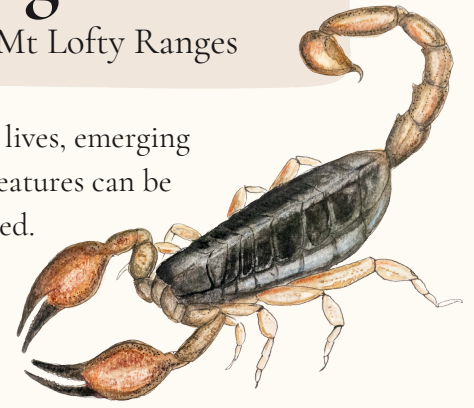
Nocturnal invertebrates of the Adelaide and Mt Lofty Ranges

Nocturnal spiders, scorpions, and insects live hidden lives, emerging when the world is quiet. Looking closely at these creatures can be fascinating as many are rarely encountered.

Green Lacewing

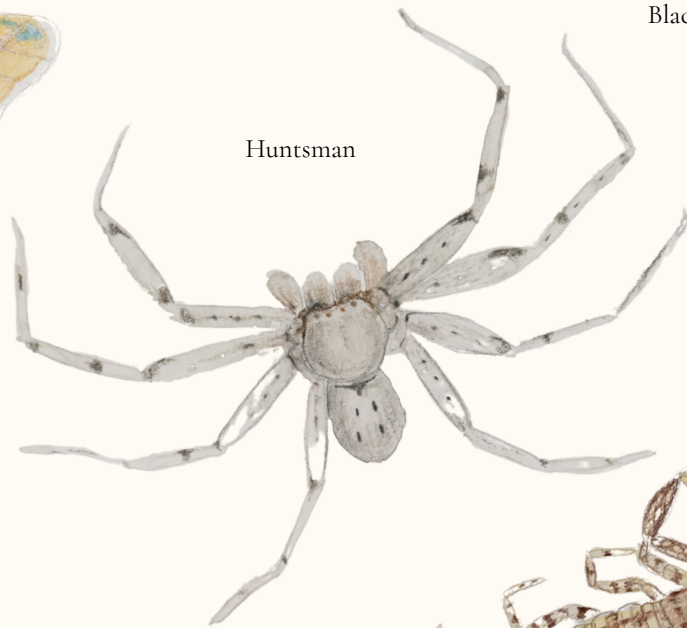


Helena Gum Moth



Black Rock Scorpion

Huntsman



Black and White Tiger Moth



Woolly Bear (caterpillar of the Black and White Tiger Moth)



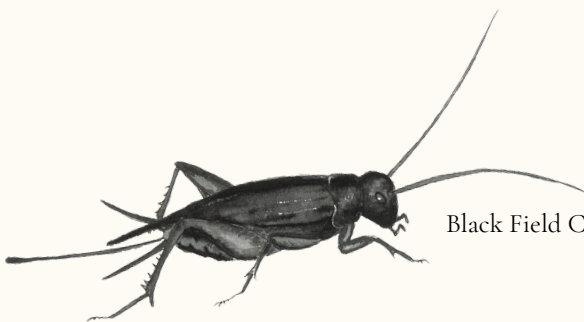
Marbled Scorpion



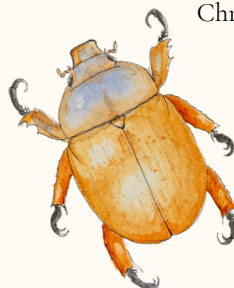
Mole Cricket



Black Field Cricket



Christmas Beetle



Rain Moth



Hump-backed Katydid

