



Common Spotted Ladybird

Nature's Helpers

Pollinators of the Adelaide Hills and Mt Lofty Ranges



Saltbush Blue

Pollination is when pollen is moved from one flower to another, allowing plants to produce seeds and fruit. Pollinators are important for producing the foods we eat, and they also help keep ecosystems healthy in our backyards, national parks, and other natural spaces.



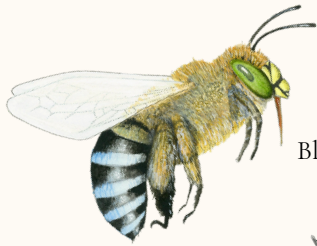
Salt and Pepper Moth



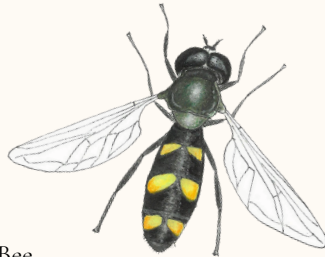
European Honey Bee (introduced)



Meadow Argus



Blue-banded Bee



Hover Fly



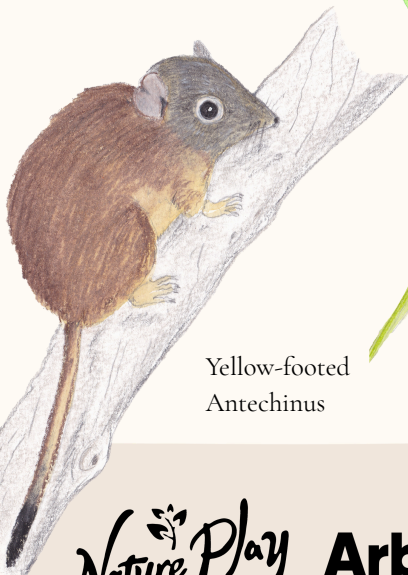
Painted Lady



Reed Bee



Eastern Spinebill



Yellow-footed Antechinus



Rainbow Lorikeet



Pygmy Possum



Wherever your adventures take you, we encourage you to connect with Traditional Owners to learn more about the significance of the plants, animals and landscapes.